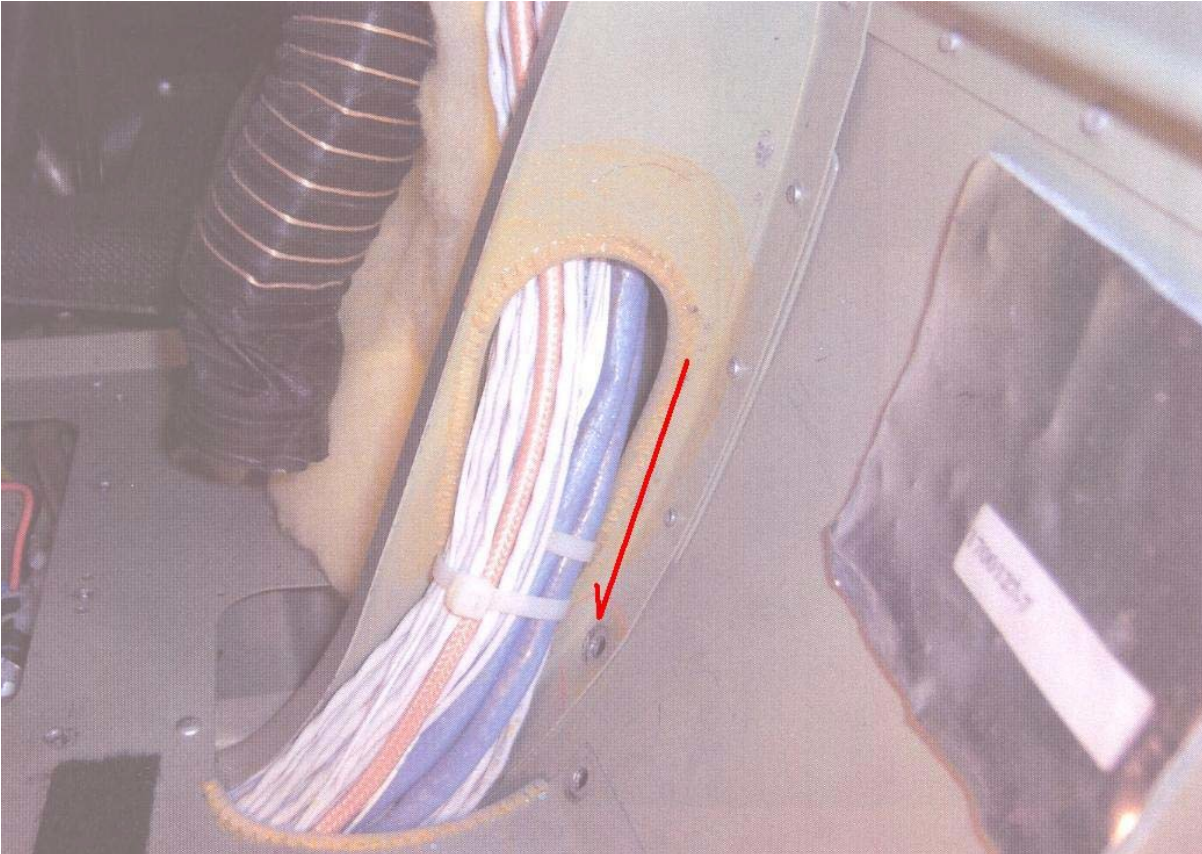
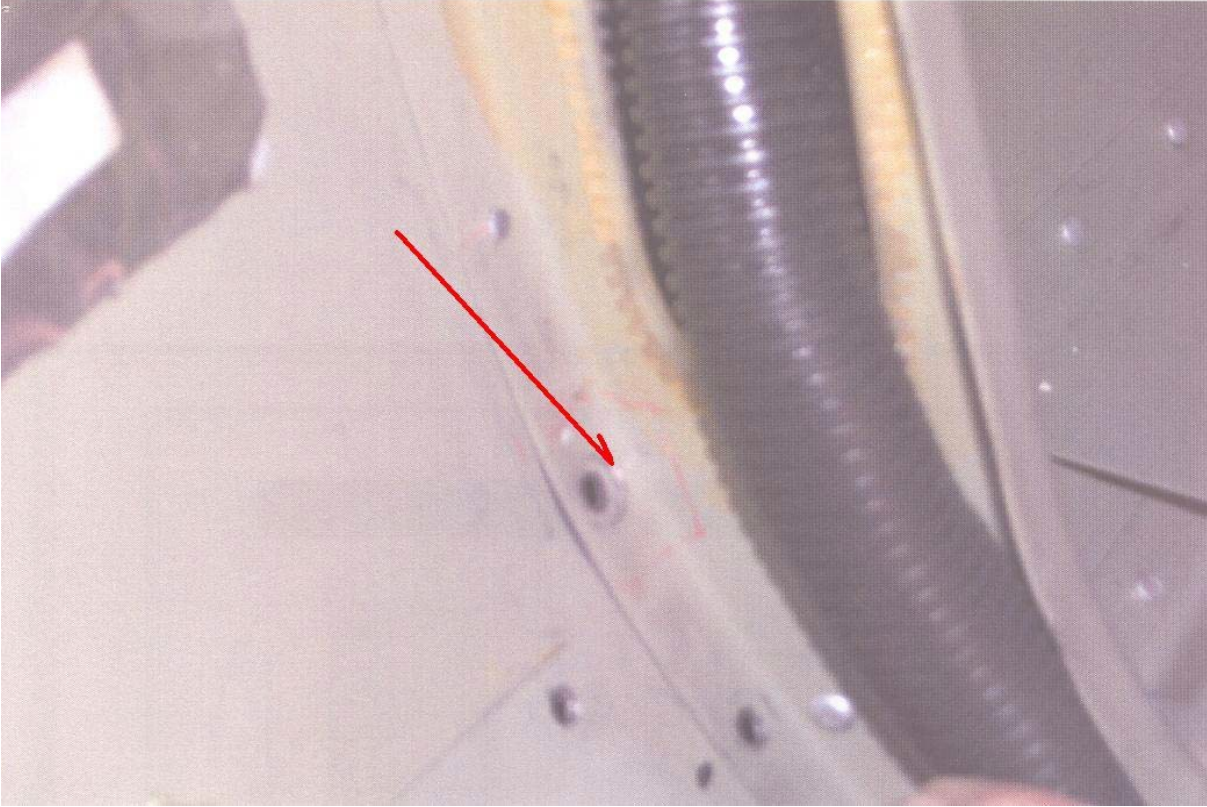


Cessna 182T, Cracked Fuselage Bulkhead Flanges, ATA 5312

"Cracks were found in the flange of both the L/H and R/H fuselage bulkheads at station 17," says a repair station technician. "(These) cracks are radiating from the upper bolt hole where the fueling step attaches. The bolt hole(s) is too close to the bend radius of the bulkhead, causing distress when the bolt is tightened. This is the second instance (we have) found in 'Restart' aircraft (post 1996)." (Bulkhead P/N: 0713787110713787. Indicating arrows have been added—Ed.)



Cessna 182T, Cracked Fuselage Bulkhead Flanges, ATA 5312



Part Total Time: 496.0 hours